

NetEnforcer® AC-1400 Series

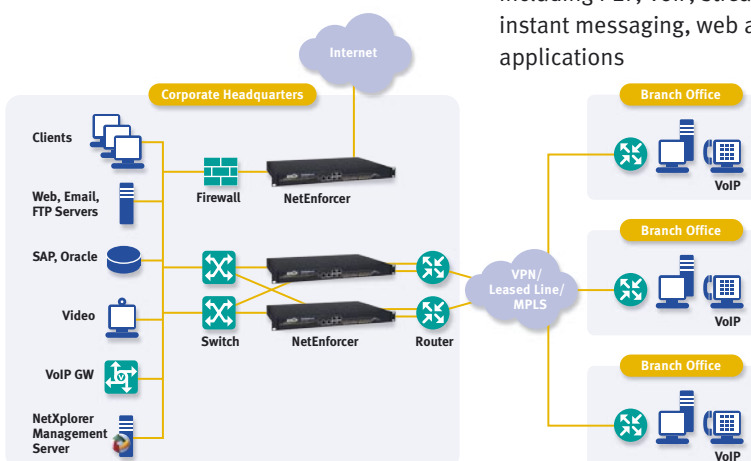
2 Gbps Bandwidth Management Device



Allot NetEnforcer® AC-1400 is designed to manage Internet traffic on multiple Ethernet links at speeds of up to 2 Gbps. Providing real-time monitoring, policy enforcement and traffic steering, this flexible device helps operators control bandwidth utilization and costs while ensuring quality of experience (QoE) for all network users.

Main Features

- High port density per unit:
 - 8 ports of 10/100/1000 Ethernet for network connectivity
 - 4 ports of 10/100/1000 Ethernet for connectivity to external services, cascading and high-availability
- Operation speeds of 45, 100, 200, 400 Mbps and 1 Gbps (full duplex)
- Powered by Allot's dynamic actionable recognition technology (DART), which provides granular awareness of subscriber, application and network topology traffic
- DART's extensive signature library accurately identifies hundreds of Internet applications and protocols, including P2P, VoIP, streaming, gaming, instant messaging, web and business applications
- Policy-based traffic steering to external network and subscriber services
- Managed by Allot NetXplorer management system, providing centralized reporting, provisioning, alerting and policy control
- Continuous traffic monitoring for fast troubleshooting, usage tracking and capacity planning
- Easy upgrade to higher speeds and richer QoS policies using the same platform
- Proactive, early-warning mechanisms provide automatic alarms concerning network events and the ability to trigger corrective actions
- Detection of traffic anomalies and mitigation of network attacks and security threats by immediate isolation of malicious traffic, without interrupting regular traffic
- Fail-safe performance with external hardware bypass and full redundancy schemes



Specifications

The NetEnforcer AC-1400 is currently available in a versatile AC-1440 model serving a range of network configurations and needs.

| | | AC-1440 |
|---|--|---|
| Capacity | Number of Connections/Flows | 2,000,000 / 4,000,000 |
| | Throughput | 2 Gbps (1 Gbps, Full Duplex) |
| | Lines/Pipes/Virtual Channels | 256 / 40,000 / 80,000 |
| | No. of Subscribers | 160,000 |
| Interfaces and Connections | Management Interface | 10/100BASE-T |
| | Network Interfaces (Internal / External) | 8 x 1000BASE-T/SX/LX |
| | Cascading/Service | 4 x 10/100/1000 Copper |
| | Console Port | Serial, RJ-45 Connector |
| Examples of Application/Protocol Signatures Supported | P2P | Including BitTorrent, eDonkey, Ares, Gnutella, Thunder, POCO, Winny |
| | VoIP | Including Windows Live Messenger Voice, SIP, Skype, Yahoo Messenger Voice, GoogleTalk, Fring |
| | Gaming | Including World of Warcraft, Final Fantasy, Guitar Hero, Second Life, QQ Games, Lineage, CounterStrike |
| | Instant Messaging/Chat | Including Windows Live Messenger, QQ, Yahoo Messenger, ICQ, STUN |
| | Web | Including HTTP Browsing, HTTPS, Mobile browsers |
| | Streaming | Including YouTube, RTMP, QQ live, PPSStream, DailyMotion, HTTP Streaming, HTTP Audio, NetFlix, Facebook Streaming |
| Networking Standards | Traffic Encapsulation | Including L2TP, MPLS, PPPoE |
| Product Options | Monitoring | Yes |
| | QoS Enforcement Levels | 45, 100, 200, 400 Mbps and 1 Gbps (full duplex) |
| | Redundancy | Active (1:1, 1+1) |
| Management | NetExplorer Centralized Management | Yes |
| | NetExplorer Long-term Reporter | Yes |
| | NetExplorer Real-time Reporter | Add-on license |
| Full Integration with Network & Subscriber Services | Allot Subscriber Management Platform | For service tiering and quota management solutions |
| | Allot ServiceProtector | For DoS/DDoS detection and mitigation solutions |
| | Allot WebSafe | For URL filtering solutions |
| | Allot MediaSwift | For media caching and video acceleration solutions |
| | Traffic Steering | For deployment of external services |
| Dimensions | Size | Standard 1U by 19" rack mount |
| | Weight | 9.1 kg (20 lb) |
| | Bypass Unit | External, 1U, 19" rack mount |
| Power | Input (AC/DC) | 100 to 240 VAC ; -48 VDC |
| | Power Supply Units | 2 (Load Sharing) |
| | Redundancy for PSUs | 1 + 1 |
| | Power Consumption | 100W |
| | Heat Dissipation | 341 BTU/hour |
| Safety and Certifications | Safety | UL 60950-1/ CSA CS22.2 60950 (ITE) EN 60950-1 ITE |
| | Emission | EN 55024:1994; A1:2001; A2:2003 Immunity for ITE EN 61000-3-2:2001 Harmonic Emissions EN 61000-3-3:1995; A1:2000 Voltage Fluctuations EN 55022:1998; A1:2000; A2:2003 Emissions for ITE VCCI FCC Part 15, Sub-Part B |

About Allot Communications

Allot Communications (NASDAQ: ALLT) is a leading provider of intelligent IP service optimization solutions for DSL, wireless and mobile broadband carriers, service providers, and enterprises. Allot's rich portfolio of hardware platforms and software applications utilizes deep packet inspection (DPI) technology to transform broadband pipes into smart networks that can rapidly and efficiently deploy value added Internet services. Allot's scalable, carrier-grade solutions provide the visibility, security, application control and subscriber management that are vital to managing Internet service delivery, guaranteeing quality of experience (QoE), containing operating costs, and maximizing revenue in broadband networks.

www.allot.com info@allot.com

- **Americas:** 300 TradeCenter, Suite 4680, Woburn, MA 01801 USA · Tel: (781) 939-9300 · Toll free: 877-255-6826 · Fax: (781) 939-9393
- **Europe:** NCI – Les Centres d’Affaires Village d’Entreprises ‘Green Side’, 400 Avenue Roumanille, BP309, 06906 Sophia Antipolis Cedex, France · Tel: 33 (0) 4-93-001160 · Fax: 33 (0) 4-93-001165
- **Asia Pacific:** 6, Ubi Road 1, Wintech Centre 6-12, Singapore 408726 · Tel: 65 6841-3020 Fax: 65 6747-9173
- **Japan:** Kanda Surugadai 4-2-3-301, Chiyoda-ku, Tokyo 101-0062 · Tel: 81 (3) 5297-7668 · Fax: 81 (3) 5297-7669 · www.allot.co.jp
- **Middle East and Africa:** 22 Hanagar Street, Industrial Zone B, Hod-Hasharon, 45240, Israel · Tel: 972 (9) 761-9200 · Fax: 972 (9) 744-3626

